

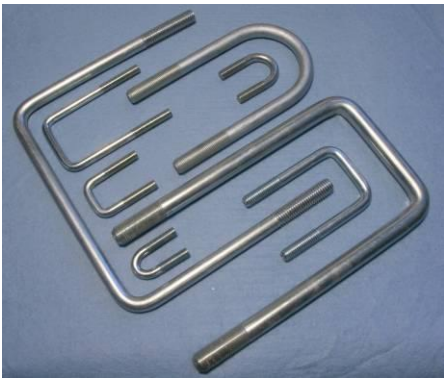
Wire Forming on Videx machines

Videx Machine Engineering is manufacturing Fully Automatic machinery for Wire Products for almost 40 years.

The VAS machines pull wire from coil, straighten, cut to length, roll threads and bend to shapes such a U-Bolts, Eye Bolts, Anchor Bolts, etc.

The machines can roll chamfers, knurls, grooves and other form in addition or instead of thread rolling.

Other stations can be added to the machine for Heading, Extrusion, Chamfer cutting, Stamping and Drilling.



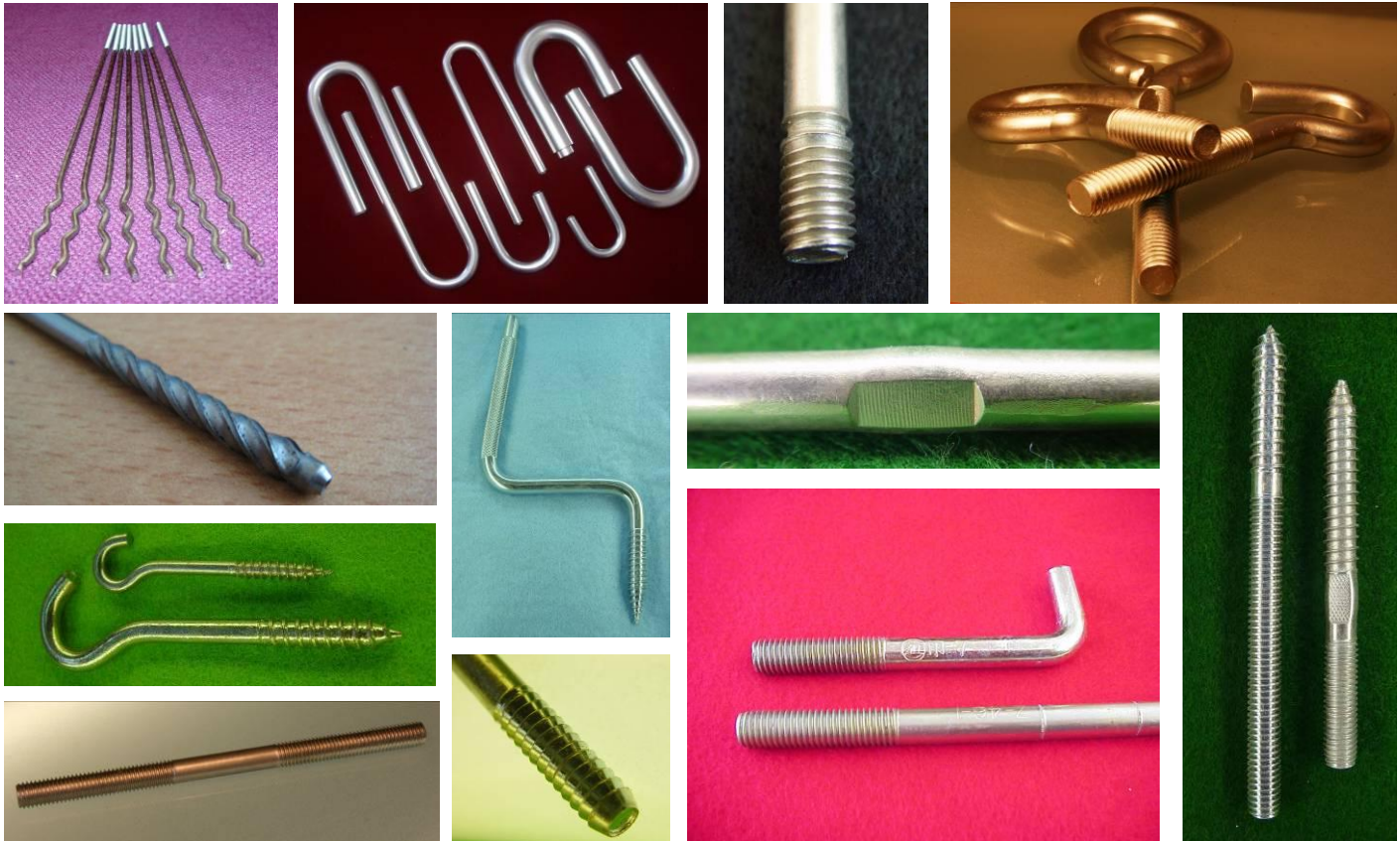
Samples of parts that can be made on the machine:

- U Bolts, Eye Bolts, Anchor Bolts.
- Truck and Trailer U Bolts with chamfers.
- Straight Studs, with threads on one or both sides.
- Hanger Bolts (one side wood screw thread and one side machine thread).
- Hooks and Eye Bolts with Wood Screw Threads.
- Weld Studs and other studs, Chamfered, Stamped, and Fully Threaded.
- Chain Links and other straight parts with chamfered ends.
- Bicycle shafts, Shafts for Children Toys.
- Extruded Studs for Engines and Extruded U-Bolts.

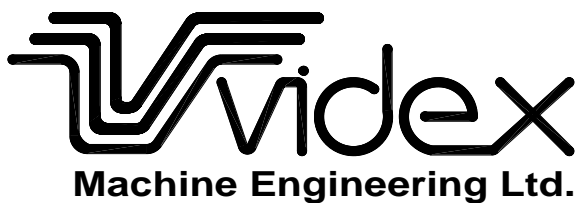


The VAS machines perform multiple operations at the same time, in independent stations and therefore at high speed, using inexpensive and easy to set tooling.

The production of U-Bolts is 60-120 PPM, Eye Bolts are made at 50-80 PPM and straight studs can be made up to 200 PPM.



Model & Specifications	VAS-0 series	VAS-10 series	VAS-20 series	VAS-25 series	VAS-30 series	VAS-35 series	VAS-40 series
Thread size; up to 700 N/mm²	M-2.5 to M-6 NC#4 to 1/4"	M-4 to M-8 NC#8 to 5/16"	M-6 to M-12 1/4" to 1/2"	M-8 to M-16 5/16" to 5/8"	M-10 to M-20 3/8" to 3/4"	M-12 to M-24 1/2" to 1"	M-16 to M-33 5/8" to 1-1/4"
Standard length; Straight studs	250mm / 10"	560mm / 22"	660mm / 26"	750mm / 30"	1,000mm / 39"	1,200mm / 47"	1,500mm / 59"
Standard length; Bent parts	200mm / 8"	450mm / 18"	550mm / 22"	600mm / 24"	635mm / 25"	700mm / 28"	750mm / 30"
Thread rolling die pocket	32mm	60mm	100mm	100-125mm	100-155mm	100-155mm	150-200mm)
Minimum between threads	25mm	36mm	40mm	46mm	64mm	64mm	90mm
Production; Straight studs	100-200 PPM	60-240 PPM	50-200 PPM	45-180 PPM	40-120 PPM	35-105 PPM	25-75 PPM
Production; Bent parts	80-160 PPM	60-150 PPM	50-120 PPM	45-100 PPM	40-90 PPM	35-80 PPM	25-60 PPM
Max. distance between: Round bottom U Bolt legs	50mm / 2"	100mm / 4"	150mm / 6"	175mm / 7"	200mm / 8"	220mm / 9"	250mm / 10"
Square bottom U Bolt legs	75mm / 3"	150mm / 6"	180mm / 7"	250mm / 10"	400mm / 20"	450mm / 20"	500mm / 20"
Main motor	2.2 KW / 3 HP	5.5 KW / 7.5 HP	15 KW / 20 HP	18 KW / 25 HP	30 KW / 40 HP	40 KW / 50 HP	60 KW / 75 HP
Straightener motor	1.5 KW / 2 HP	4.0 KW / 5.5 HP	7.5 KW / 10 HP	11 KW / 15 HP	18 KW / 25 HP	30 KW / 40 HP	75 KW / 100HP
Floor space	2.2m X 0.8m	2.3m X 1.0m	3.3m X 1.1m	4.0m X 1.3m	4.7m X 1.5m	5.2m X 1.6m	6.0m X 2.0m



P.O.Box 260 (20 Shabazi St.)
Tel: +972-3-536-4801
Fax: +972-3-536-4802
E-Mail: videx@videx.co.il
Yahud 56100, ISRAEL